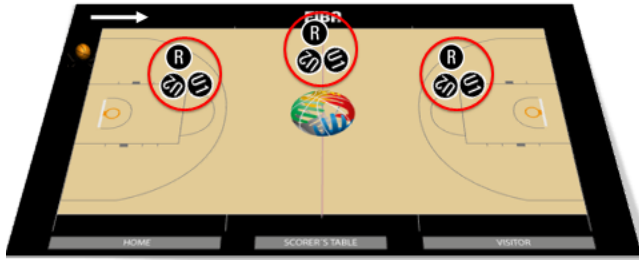


FIBA Updates –

1. Change in the official's court positions during time-outs:

Court positions / time-outs 1

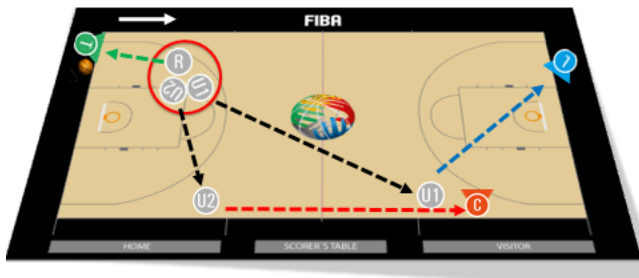
HSB / page
189



The three standard time-out positions – always in the opposite side.
Leave the ball where the game will be resumed.

Court positions / time-outs 2

HSB / page
189



20 seconds before end of the time-outs – two referees move close to team bench areas in order to be ready to activate teams returning to the court at 50 seconds warning signal.

2. Double whistles on fouls –

- On a double whistle, the official opposite the table takes the call.

Fouls / switch - foul on the frontcourt

HSB / page
213

Double whistle by center & trail
Referee on the opposite side reports the foul



3. Last Free Throw Position –

3PO advanced: Free throws Positions & COVERAGE

Last free throw - players in the new front court
trail adjusts towards to the new front court
(position depends on the number of the players in the frontcourt & time of the game)

